

Semarchy designed xDM as the world's first fully-functional Master Data Management solution to bring material design and a truly agile business-driven solution to the enterprise.

## Master Anything with xDM

Owing to the algebraic concept that “x” can be anything, xDM is unique in its breadth of ability to master any kind of data – customer B2B and B2C data, product data, reference data, metadata, location, organization, supplier, etc. xDM is a true evolution of the Semarchy multi-vector MDM solution for integration, management and governance of enterprise information.



### SMART

Algorithms empower stewardship and advance matching, survivorship, curation and classification.

A native, semantically complete data model facilitates transparent lineage, auditability and governance.



### AGILE

Agile methodologies applied to MDM are materialized via an intuitive, integrated design, development and user interface.

Adaptive modeling enables business flexibility.



### MEASURABLE

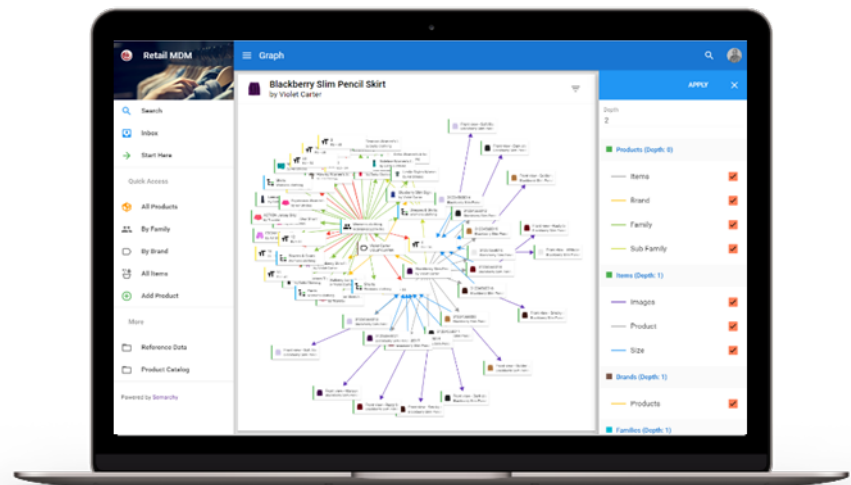
MDM is an initiative, not a technology.

xDM is evolved into a business with minimal disruption, to optimize adoption and show measurable enterprise ROI almost immediately.



### Multi-Vector MDM

With support for any domain (customer, products, etc), style (consolidation, centralized, etc.), use case (operational, analytical), organization and industry, xDM provides multi-vector MDM in a single platform.



### Intuitive Navigation, Graph and Hierarchies

Interacting with any data is made simple, consistent and finely tuned to business needs in applications designed with xDM. xDM demystifies relationship complexity. It supports defining, maintaining and browsing any type of relationship, hierarchy and graph.



### User Experience for Productivity

Based on Google's Material Design Language, the xDM interface drives an unparalleled user experience, offering simplicity and responsive design that powers ease-of-use for faster business value and adoption by business users.



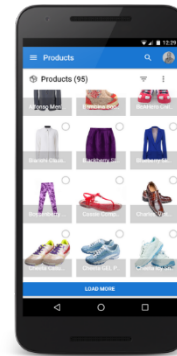
### Flexible Modeling

With xDM, your business does not need to change or adjust to the MDM initiative. xDM is designed from the ground up to meet your requirements and evolves with them at the pace of your business.



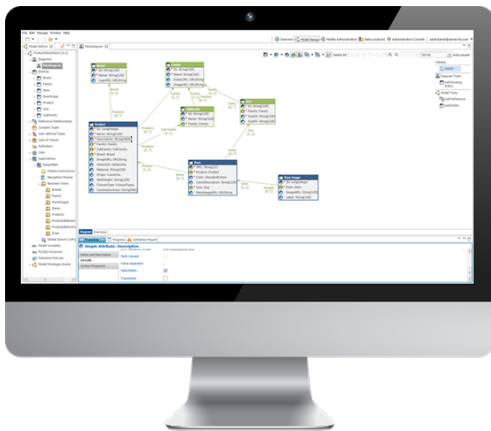
### Collaborative Governance

xDM empowers business users by connecting critical functions and applications with workflows and guided data management. It ensures regulatory compliance with built-in data access policy and traceability.



**Putting data stewardship in the hands of the business user transforms data consumers into data producers**

xDM is Intelligent MDM™. It provides data architects with one single and unified metadata-driven platform to define applications in one place. xDM takes care of generating all the pieces intelligently – depending on the MDM styles and domains – including the physical tables, the data certification framework, the enrichment and standardization processes, the integration services, the user interfaces, and more.



### Agile Design

xDM empowers data architects with a unified metadata-driven platform to define all aspects of the applications. xDM takes care of generating all the pieces intelligently – depending on the MDM styles and domains – including the storage, the data quality, enrichment, standardization and certification processes, the integration services, the user interfaces, and more.



### Smart Data Certification

xDM enriches and standardizes any data, enforces all data quality rules and supports automated and manual duplicates match and merge. It turns data stewards into champions with powerful capabilities to manage records in any hub style.



### Extensible at Enterprise-Scale

xDM runs in any configuration and at any scale, from thousands to hundreds of millions of records, on-premises or in the Cloud. The platform capabilities are extensible to leverage external data providers or services.

[semarchy.com/xdm](http://semarchy.com/xdm)

450 Townsend St.  
Suite 100  
San Francisco, CA 94107

+1.650.240.2000